



Garner Drive

East Malling, West Malling ME19 6NF

- Boating In Excess Of 1400 Sq Ft Of Accommodation
 - South Facing Rear Garden
 - Master Bedroom With En Suite
- Recently Fitted Modern Family Bathroom
 - Private Driveway And Garage
- Open Plan Kitchen/ Diner With Integrated Appliances

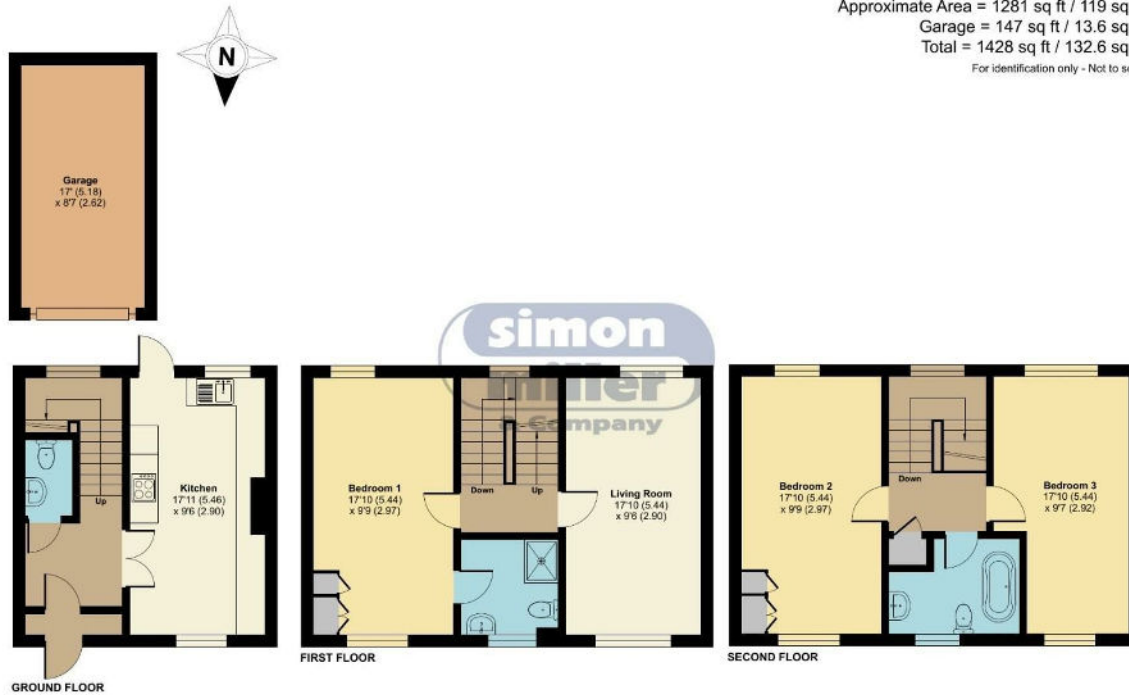
Asking Price £450,000 Freehold

Local Authority
Council Tax Band E
EPC Rating D

Garner Drive, East Malling, West Malling, ME19v

Approximate Area = 1281 sq ft / 119 sq m
Garage = 147 sq ft / 13.6 sq m
Total = 1428 sq ft / 132.6 sq m

For identification only - Not to scale



Floor plan produced in accordance with RICS Property Measurement Standards incorporating International Property Measurement Standards (IPMS2 Residential). © nichecom 2024. Produced for Simon Miller & Company. REF: 1082074



Malling Office
777 London Road, Larkfield, Aylesford,
Kent, ME20 6DE

Contact
01732 875706
larkfieldsales@simonmiller.co.uk
<https://simonmiller.co.uk/>

Agents Note: Whilst every care has been taken to prepare these particulars, they are for guidance purposes only. All measurements are approximate and for general guidance purposes only and whilst every care has been taken to ensure accuracy, they should not be relied upon and potential buyers/tenants are advised to recheck the measurements.