

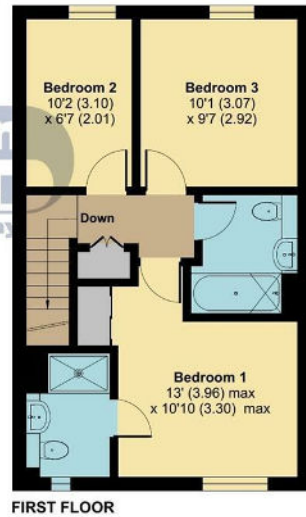
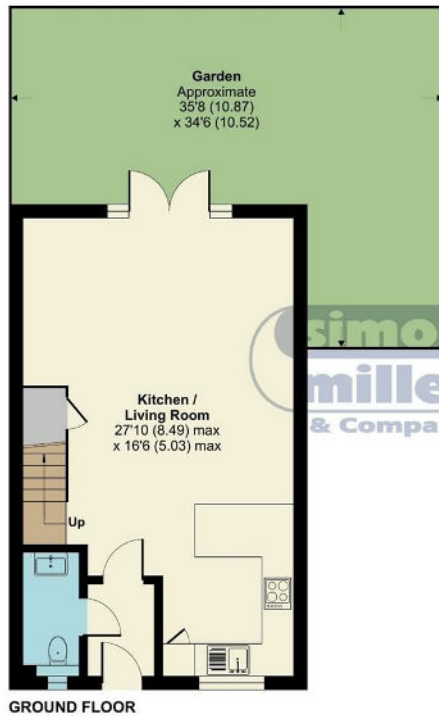


Bella Rosa Drive Langley, Maidstone ME17 3US

- GUIDE PRICE £350,000 - £375,000
- Car Port With Parking For Two Cars
- Stylish & Contemporary Kitchen And Bathrooms
- An Excellent Array Of Local Amenities Including A Local Aldi Supermarket & Just 3 Miles From Maidstone Town Centre
- 2.7 Miles From Bearsted Train Station & 3 Miles To Maidstone West With Links To London
- Just Over 2 Years Old, With Remainder Of NHBC
- Modern Three Bedroom End Of Terrace Family Home
- En-Suite To Master Bedroom
- Walking Distance To Langley Park Primary Academy & Just 1.5 Miles To Five Acre Wood Secondary School
- Large Rear Garden

Guide Price £350,000 Freehold

Local Authority
Council Tax Band
EPC Rating B



Bella Rosa Drive, Maidstone, ME17

Approximate Area = 921 sq ft / 85.6 sq m
For identification only - Not to scale



 Floor plan produced in accordance with RICS Property Measurement Standards incorporating International Property Measurement Standards (IPMS2 Residential). © richecom 2024. Produced for Simon Miller & Company. REF: 1083761

Maidstone & The Weald Office
11 Colman House, Colman Parade, King
Street, Maidstone, Kent, ME14 1DJ

Contact
01622 691255
maidstonesales@simonmiller.co.uk

Agents Note: Whilst every care has been taken to prepare these particulars, they are for guidance purposes only. All measurements are approximate and for general guidance purposes only and whilst every care has been taken to ensure accuracy, they should not be relied upon and potential buyers/tenants are advised to recheck the measurements.