



The Lakes

Larkfield, Aylesford ME20 6GS

- Fantastic Lake Views
- Master Bedroom With En Suite
- Living Room With Balcony
- Flexible Family Accommodation
- Three / Four Double Bedrooms
- Allocated Parking
- Popular 'Leybourne Lakes' Development

Offers In Excess Of £400,000 Freehold

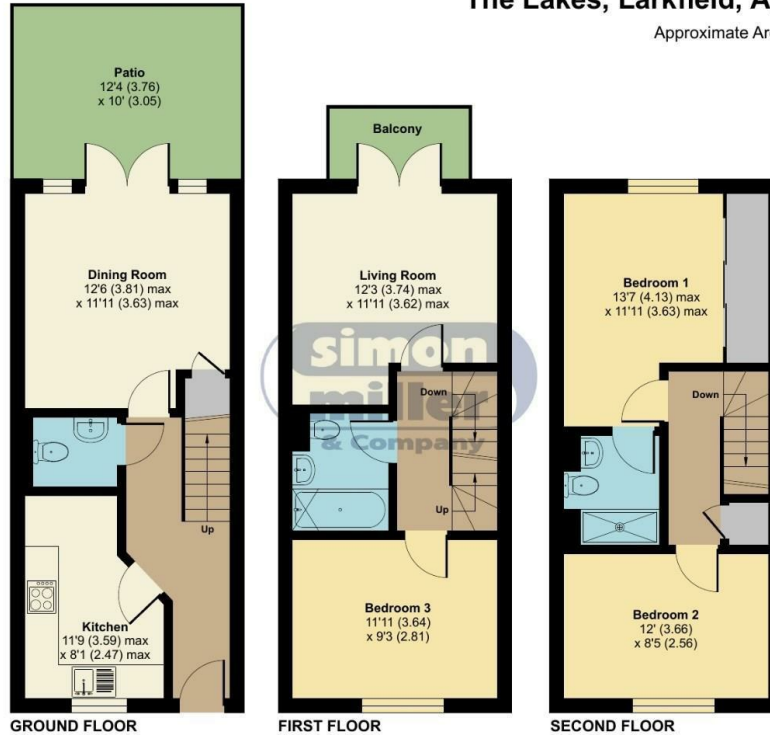


Local Authority
Council Tax Band E
EPC Rating C

The Lakes, Larkfield, Aylesford, ME20

Approximate Area = 1047 sq ft / 97.2 sq m

For identification only - Not to scale



Floor plan produced in accordance with RICS Property Measurement Standards incorporating International Property Measurement Standards (IPMS2 Residential). © richecom 2024. Produced for Simon Miller & Company. REF: 1084734



Malling Office

777 London Road, Larkfield, Aylesford,
Kent, ME20 6DE

Contact

01732 875706
larkfieldsales@simonmiller.co.uk
<https://simonmiller.co.uk/>

Agents Note: Whilst every care has been taken to prepare these particulars, they are for guidance purposes only. All measurements are approximate and for general guidance purposes only and whilst every care has been taken to ensure accuracy, they should not be relied upon and potential buyers/tenants are advised to recheck the measurements.