



Ufton Close

, Maidstone ME15 8EH

- Large Four Bedroom Detached Family Home
- Utility Room and Ground Floor WC
- Bathroom On Both Floors
- Popular Location
- Garage & Off Road Parking
- Good Sized Secluded Rear Garden

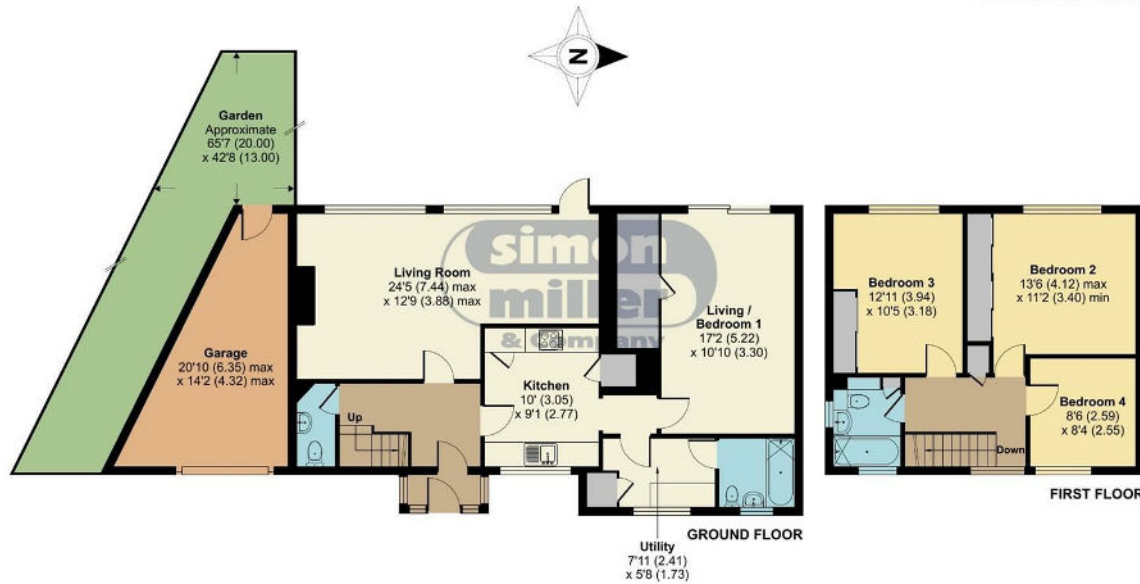
Asking Price £500,000 Freehold

Local Authority
Council Tax Band E
EPC Rating C

Ufton Close, Maidstone, ME15

Approximate Area = 1395 sq ft / 129.6 sq m
Garage = 185 sq ft / 17.2 sq m
Total = 1580 sq ft / 146.8 sq m

For identification only - Not to scale



Floor plan produced in accordance with RICS Property Measurement Standards incorporating International Property Measurement Standards (IPMS2 Residential). © nichecom 2024. Produced for Simon Miller & Company. REF: 1081115



Maidstone & The Weald Office
11 Colman House, Colman Parade, King
Street, Maidstone, Kent, ME14 1DJ

Contact
01622 691255
maidstonesales@simonmiller.co.uk

Agents Note: Whilst every care has been taken to prepare these particulars, they are for guidance purposes only. All measurements are approximate and for general guidance purposes only and whilst every care has been taken to ensure accuracy, they should not be relied upon and potential buyers/tenants are advised to recheck the measurements.