

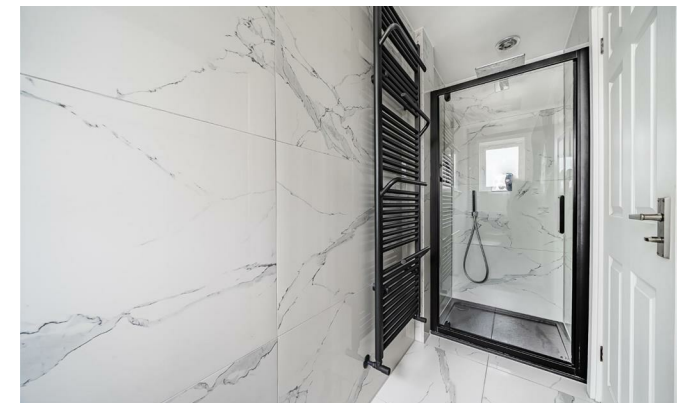


Lunsford Lane

Larkfield, Aylesford ME20 6HT

- GUIDE PRICE £375,000 - £400,000
- Private Gated Driveway And Garage
- Modern Fitted Kitchen With Integrated Appliances
 - Built In 2014
- Recently Fitted En Suite And Bathroom
 - Open Plan Layout
 - Extended Ground Floor
 - Master Bedroom With En Suite

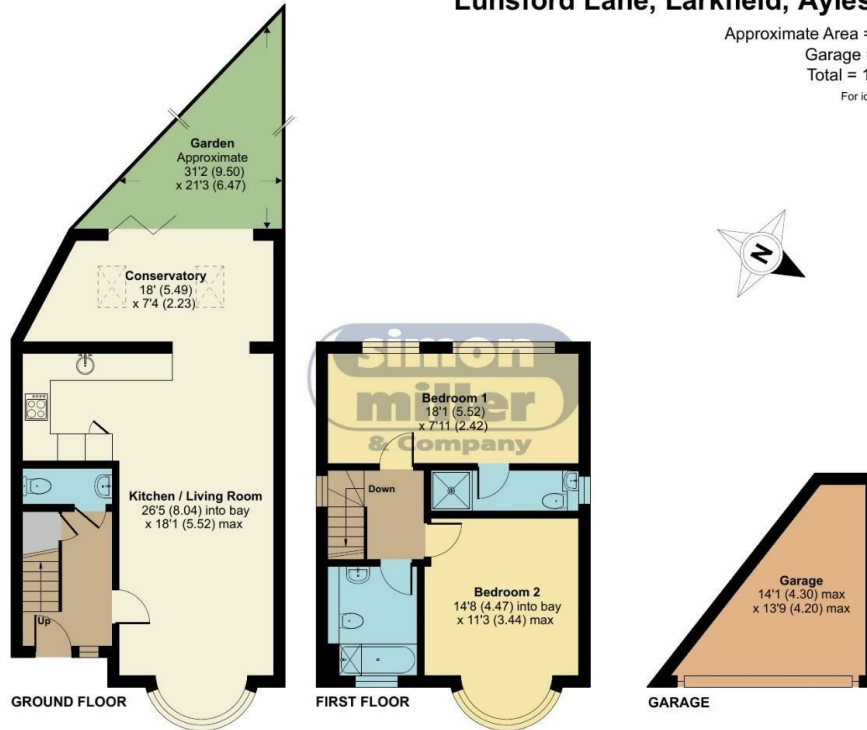
Price Guide £375,000 Freehold



Local Authority
Council Tax Band D
EPC Rating C

Lunsford Lane, Larkfield, Aylesford, ME20

Approximate Area = 991 sq ft / 92 sq m
Garage = 119 sq ft / 11 sq m
Total = 1110 sq ft / 103 sq m
For identification only - Not to scale



Floor plan produced in accordance with RICS Property Measurement Standards incorporating International Property Measurement Standards (IPMS2 Residential). © nichcom 2024. Produced for Simon Miller & Company. REF: 1105160

Malling Office

777 London Road, Larkfield, Aylesford,
Kent, ME20 6DE

Contact

01732 875706
larkfieldsales@simonmiller.co.uk
<https://simonmiller.co.uk/>

Agents Note: Whilst every care has been taken to prepare these particulars, they are for guidance purposes only. All measurements are approximate and for general guidance purposes only and whilst every care has been taken to ensure accuracy, they should not be relied upon and potential buyers/tenants are advised to recheck the measurements.

