



Marlowe Road

Larkfield, Aylesford ME20 6TE

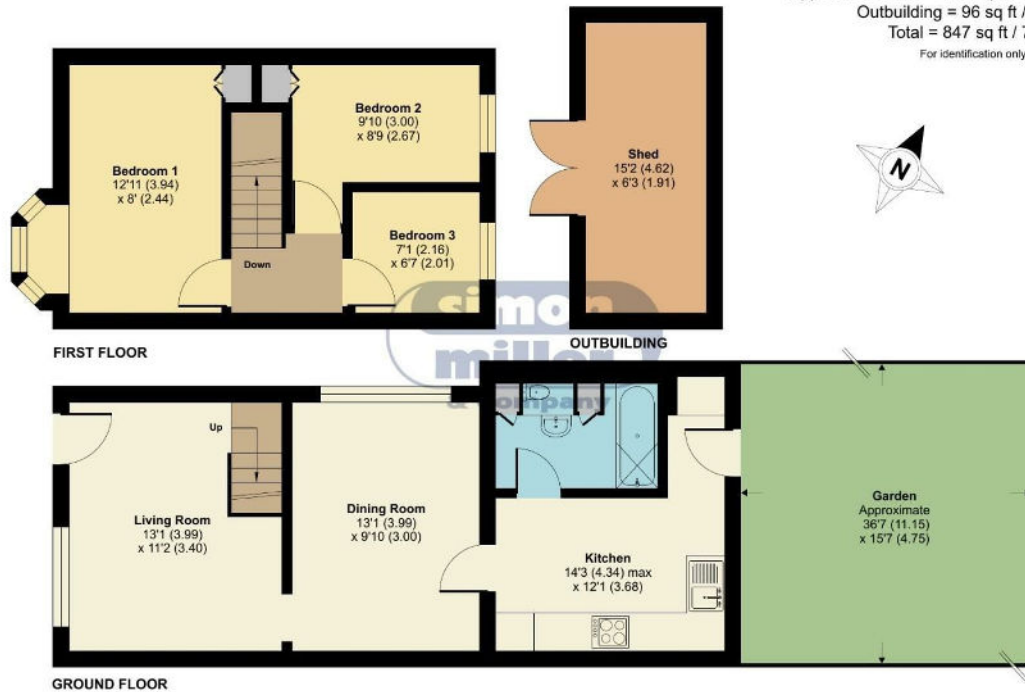
- GUIDE PRICE £330,000 - £350,000
 - Allocated Parking
- Recently Decorated Throughout
- Within Close Proximity Of Amenities
- Two Reception Rooms
- Ground Floor Extension
- Popular 'Poets' Development
- Ready To View NOW!


£330,000 Freehold

Local Authority
Council Tax Band D
EPC Rating C

Marlowe Road, Larkfield, Aylesford, ME20

Approximate Area = 751 sq ft / 69.7 sq m
Outbuilding = 96 sq ft / 8.9 sq m
Total = 847 sq ft / 78.6 sq m
For identification only - Not to scale



 Floor plan produced in accordance with RICS Property Measurement Standards incorporating International Property Measurement Standards (IPMS2 Residential). © nichecom 2024. Produced for Simon Miller & Company. REF: 1098928



Malling Office
777 London Road, Larkfield, Aylesford,
Kent, ME20 6DE

Contact
01732 875706
larkfieldsales@simonmiller.co.uk
<https://simonmiller.co.uk/>

Agents Note: Whilst every care has been taken to prepare these particulars, they are for guidance purposes only. All measurements are approximate and for general guidance purposes only and whilst every care has been taken to ensure accuracy, they should not be relied upon and potential buyers/tenants are advised to recheck the measurements.