



Lettings



## Thackeray Road

Larkfield, Aylesford ME20 6TJ

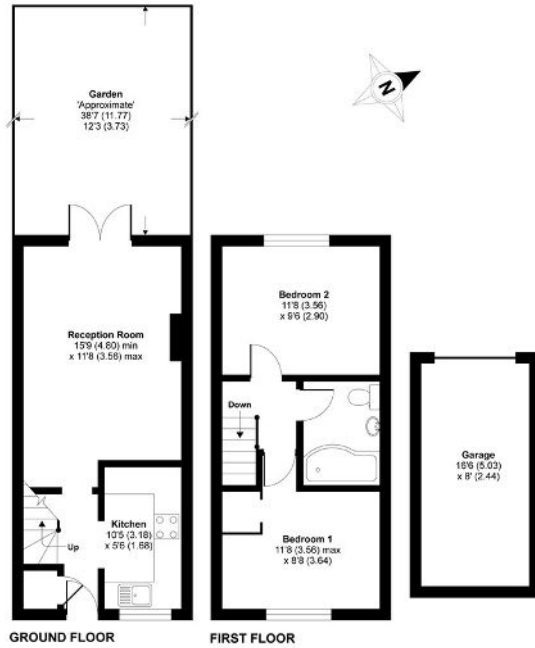
- Ideal 2 Double Bedroom Home
- Good Condition Throughout
- Open Planned Living Space
- Available early April!
- Garage En-Bloc
- Private Location
- Popular 'Poets Development'

**£1,250 PCM**

Local Authority Tonbridge and  
Malling Borough Council  
Council Tax Band C  
EPC Rating D

**Thackeray Road, Larkfield, Aylesford, ME20**

APPROX. GROSS INTERNAL FLOOR AREA 758 SQ FT 70.4 SQ METRES (INCLUDES GARAGE)



Whilst every attempt has been made to ensure the accuracy of the floor plan contained here, measurements of doors, windows and rooms are approximate and no responsibility is taken for any error, omission or misstatement. These plans are for representation purposes only and are defined by RICS Code of Measuring Practice and should be used as such by any prospective purchaser. Specifically no guarantee is given on the total square footage of the property if quoted on this plan. Any figure given is for initial guidance only and should not be relied on as a basis of valuation.

Copyright nichecom.co.uk 2016 Produced for Simon Clarke Residential REF : 122688



**Lettings Office**

Lettings Division, 779 London Road,  
Larkfield, Aylesford, Kent, ME20 6DE

**Contact**

01732 875777  
lettings@simonmiller.co.uk  
<https://simonmiller.co.uk/landlo/services/>

Agents Note: Whilst every care has been taken to prepare these particulars, they are for guidance purposes only. All measurements are approximate and for general guidance purposes only and whilst every care has been taken to ensure accuracy, they should not be relied upon and potential buyers/tenants are advised to recheck the measurements.