



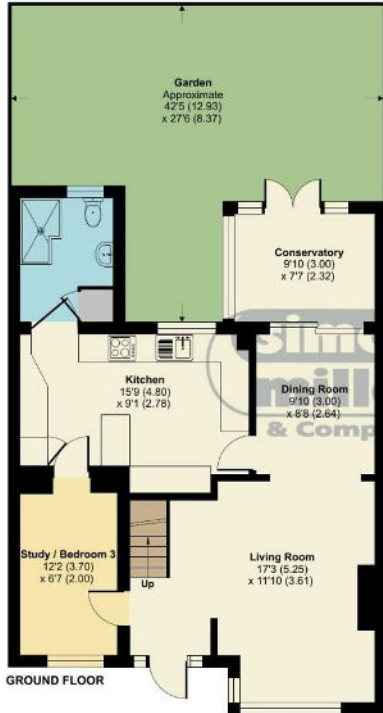
Sedley Close

, Aylesford ME20 7JG

- Extended Three / Four Bedroom Semi Detached Family Home
 - Open Plan Layout
 - Flexible Family Accommodation
 - Private Driveway
- Modern And Contemporary Throughout
 - SOUTH FACING Rear Garden
 - Save Money On Utility Bills With Solar Panels Fitted
 - Ready To View NOW!
- GUIDE PRICE: £400,000-£425,000

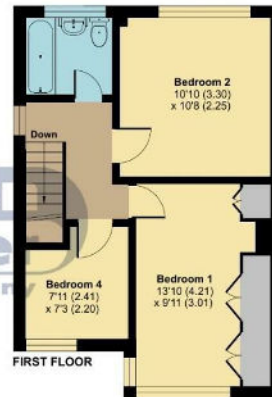
Guide Price £400,000 Freehold


Local Authority
Council Tax Band C
EPC Rating B



Sedley Close, Aylesford, ME20

Approximate Area = 1158 sq ft / 107.5 sq m
For identification only - Not to scale



 Floor plan produced in accordance with RICS Property Measurement Standards incorporating International Property Measurement Standards (IPMS2 Residential). © richcom 2024. Produced for Simon Miller & Company. REF: 1111494

Malling Office

777 London Road, Larkfield, Aylesford,
Kent, ME20 6DE

Contact

01732 875706
larkfieldsales@simonmiller.co.uk
<https://simonmiller.co.uk/>

Agents Note: Whilst every care has been taken to prepare these particulars, they are for guidance purposes only. All measurements are approximate and for general guidance purposes only and whilst every care has been taken to ensure accuracy, they should not be relied upon and potential buyers/tenants are advised to recheck the measurements.