



The Mead

Leybourne, West Malling ME19 5QZ

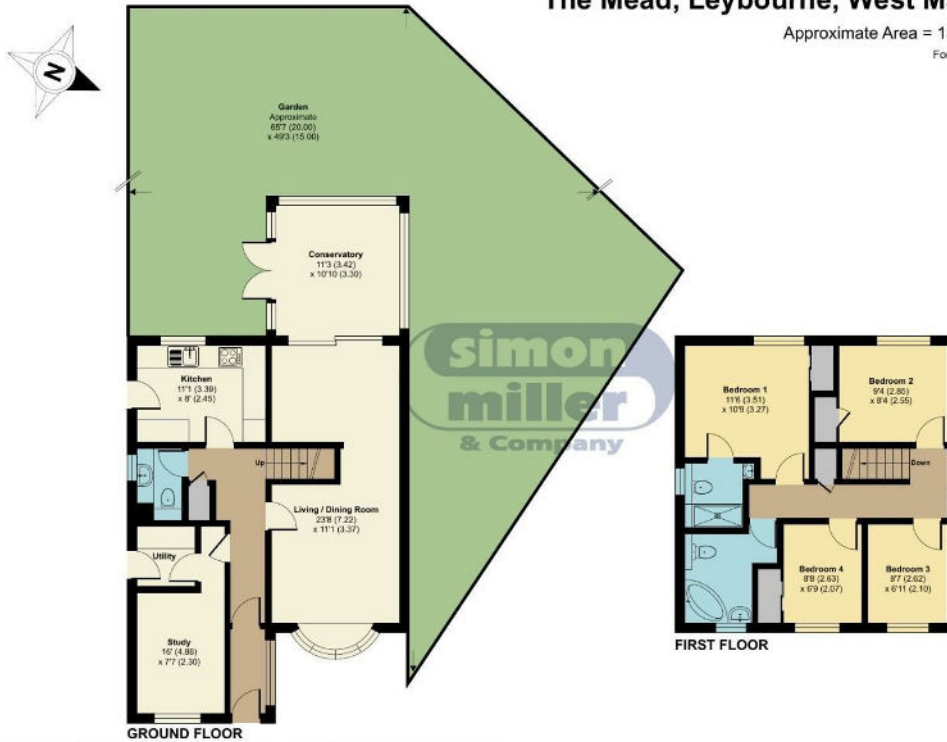
- Generous Corner Plot Detached Family Home
 - Downstairs Cloakroom
 - Separate Utility Room
 - Popular Leybourne Village location
- Well Presented Throughout
- Private Driveway For Multiple Vehicles
- Master Bedroom With En Suite
- Ready To View Now!


Asking Price £525,000 Freehold

Local Authority
Council Tax Band E
EPC Rating C

The Mead, Leybourne, West Malling, ME19

Approximate Area = 1310 sq ft / 121.7 sq m
For identification only - Not to scale



 Floor plan produced in accordance with RICS Property Measurement Standards incorporating International Property Measurement Standards (IPMS2 Residential). © nichecom 2024. Produced for Simon Miller & Company. REF: 1105861



Malling Office
777 London Road, Larkfield, Aylesford,
Kent, ME20 6DE

Contact
01732 875706
larkfieldsales@simonmiller.co.uk
<https://simonmiller.co.uk/>

Agents Note: Whilst every care has been taken to prepare these particulars, they are for guidance purposes only. All measurements are approximate and for general guidance purposes only and whilst every care has been taken to ensure accuracy, they should not be relied upon and potential buyers/tenants are advised to recheck the measurements.