



## Lunsford Lane

Larkfield, Aylesford ME20 6HW

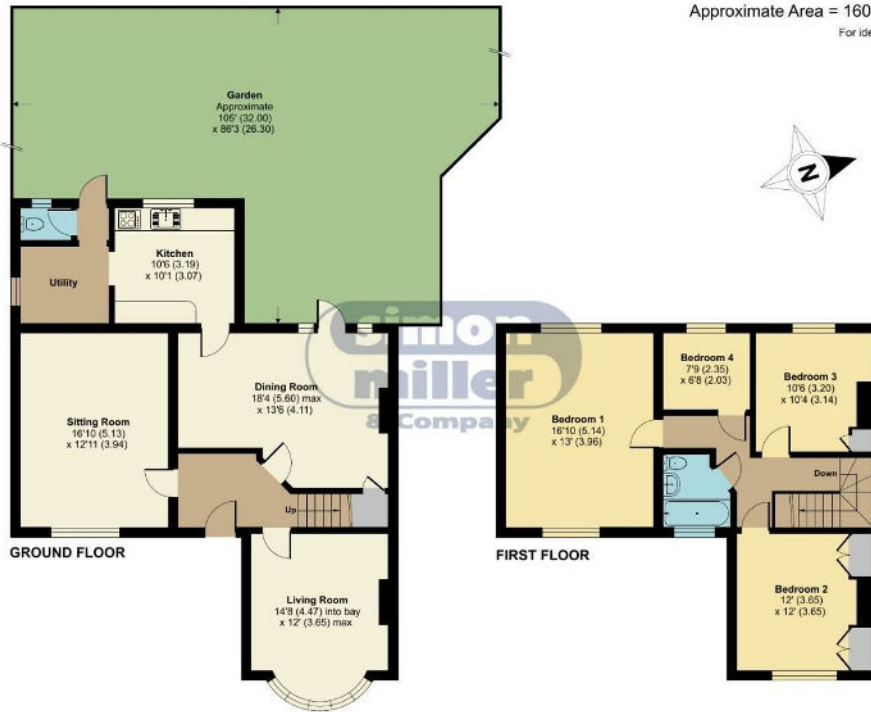
- Four Bedroom Semi Detached Home Boasting Over 1600SqFt Of Accommodation
- Large Driveway For Multiple Vehicles
  - 105Ft Rear Garden
- West Facing Rear Garden
- Substantial Plot
- Three Reception Rooms
- Three Double Bedrooms
- READY TO VIEW NOW

**Asking Price £525,000 Freehold**

Local Authority  
Council Tax Band E  
EPC Rating D

## Lunsford Lane, Larkfield, Aylesford, ME20

Approximate Area = 1606 sq ft / 149.2 sq m  
For identification only - Not to scale



Floor plan produced in accordance with RICS Property Measurement Standards incorporating International Property Measurement Standards (IPMS2 Residential). © richcom 2024. Produced for Simon Miller & Company. REF: 119284



### Mailing Office

777 London Road, Larkfield, Aylesford,  
Kent, ME20 6DE

### Contact

01732 875706  
larkfieldsales@simonmiller.co.uk  
<https://simonmiller.co.uk/>

Agents Note: Whilst every care has been taken to prepare these particulars, they are for guidance purposes only. All measurements are approximate and for general guidance purposes only and whilst every care has been taken to ensure accuracy, they should not be relied upon and potential buyers/tenants are advised to recheck the measurements.