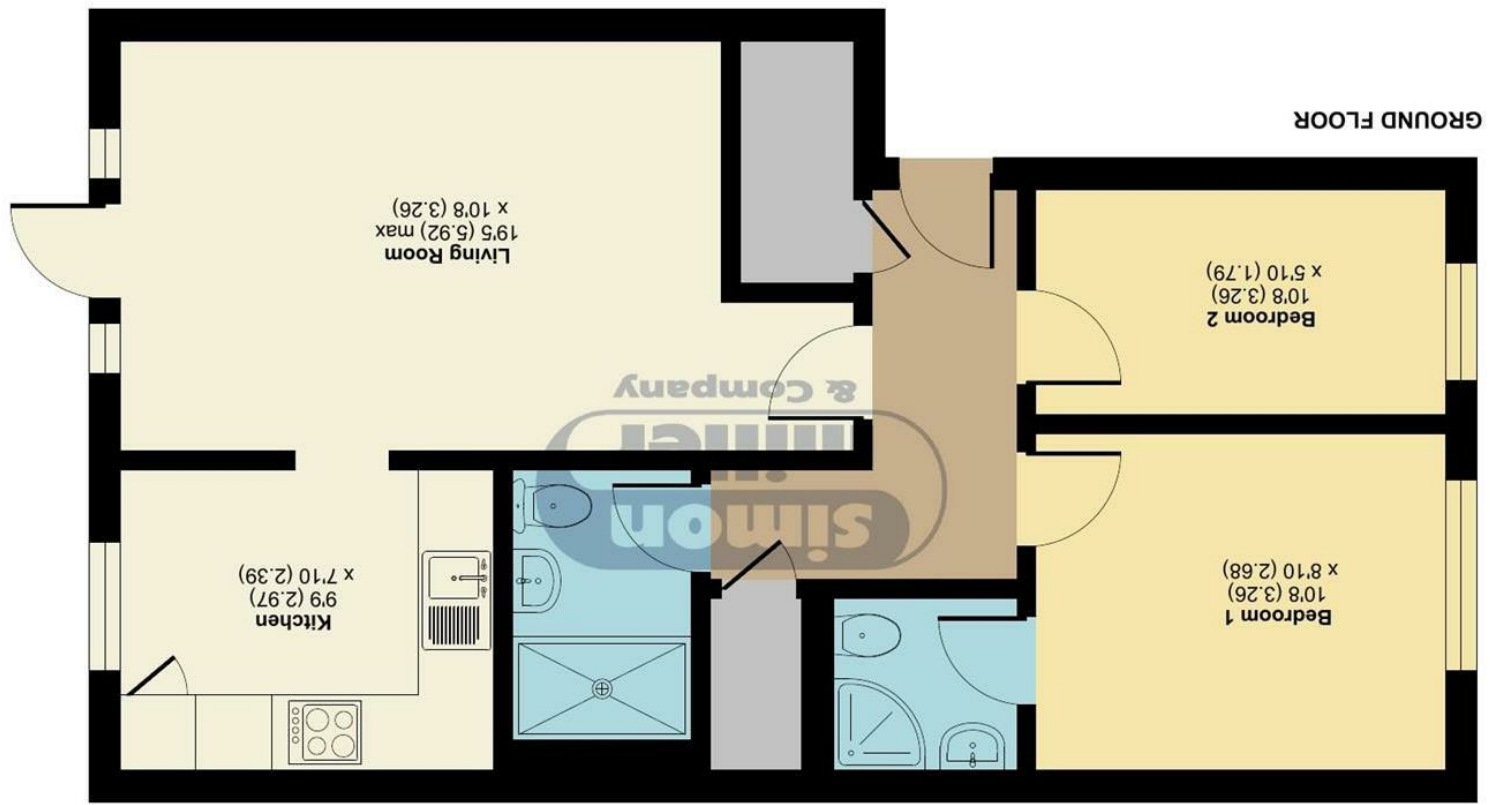


Floor plan produced in accordance with RICS Property Measurement Standards incorporating International Property Measurement Standards (IPMS2 Residential). © ndkcom 2024. Produced for Simon Miller & Company. REF: 1108396



Buckland Road, Maidstone, ME16
Approximate Area = 598 sq ft / 55.5 sq m
For identification only - Not to scale

1 Birkdale Court Buckland Road, Maidstone, ME16

Guide Price £180,000
EPC RATING: C





GUIDE PRICE £180,000 - £190,000

Simon Miller & Company are delighted to bring to the market this spacious two bedroom ground floor apartment. The property offers extremely generous accommodation and comprises entrance hall with storage, a 19' 5" x 10' 8" lounge with access to a separate fitted kitchen. There are two bedrooms overlooking communal gardens. There is a family bathroom.

Maidstone offers a welcoming environment for young and old with the River Medway running through its centre. The town is not only a cultural delight but it offers some of the county's best shopping and eating experiences. Maidstone also has three mainline stations into London. Being such a central location the property is ideally located for the Barracks, East and West train stations making this a great spot for commuters and also within easy walking distance from the town centre.

MATERIAL INFORMATION

Leasehold
Council Tax Band B
EPC Report C



- GUIDE PRICE £180,000 - £190,000 • Off Road Parking • Communal Gardens • Close To Maidstone Town Centre • Close To Railway Stations • Separate Kitchen • En-Suite • Large Walk In Wardrobe • Two Bedroom Apartment

Agents Note: All dimensions are approximate and quoted for guidance only. Reference to appliances, fixtures, fittings and services does not imply that they are necessarily in good condition, fit the purpose or are in working order. Interested parties are advised to obtain verification from their Solicitors as to the Freehold/Leasehold status of the property and confirmation regarding the condition of any fixtures and fittings included in the sale.

11, COLMAN HOUSE, MAIDSTONE, KENT, ME14 1DJ | 01622 691255 | MAIDSTONESALES@SIMONMILLER.CO.UK