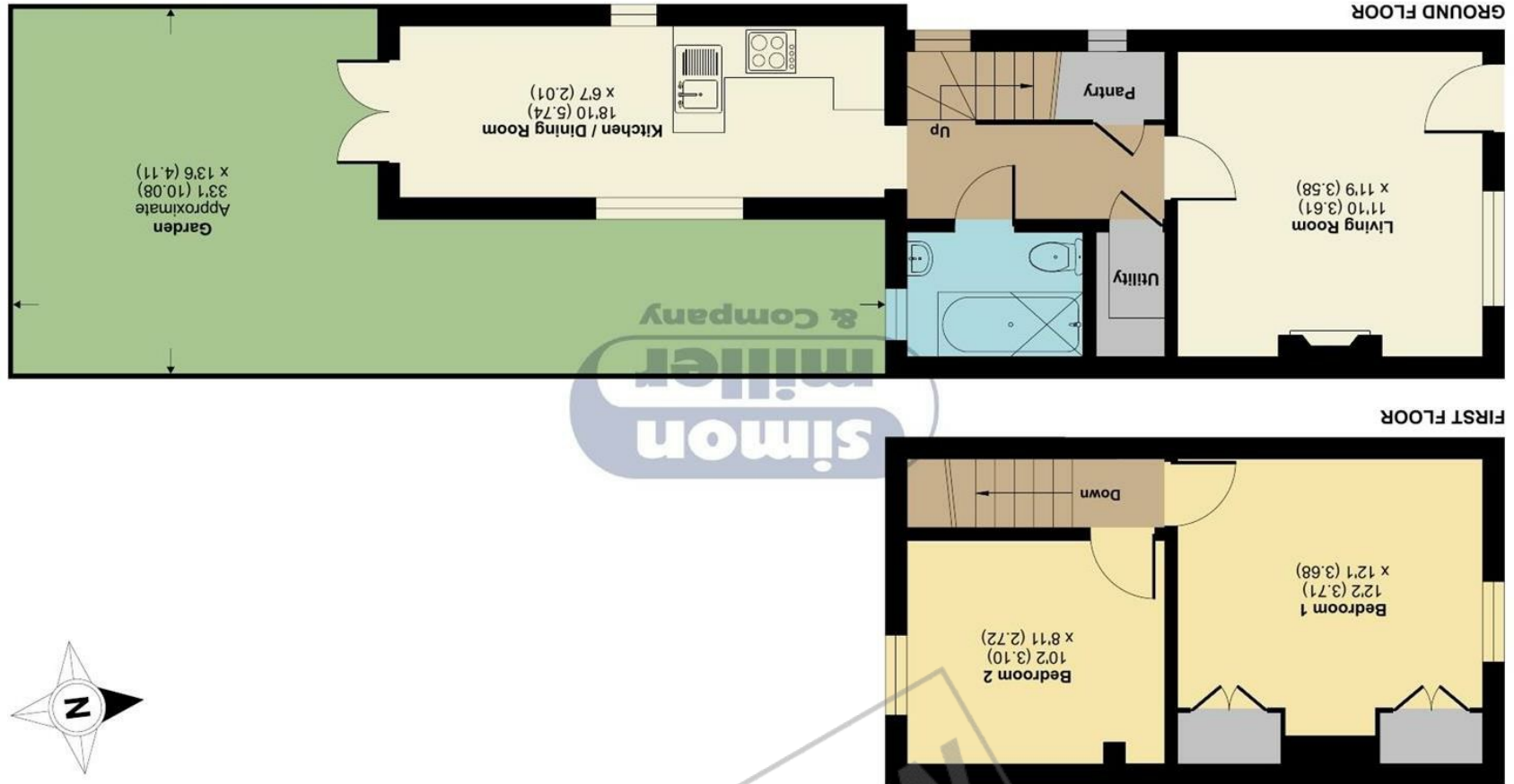


Floor plan produced in accordance with RICS Property Measurement Standards incorporating International Property Measurement Standards (IPMS2 Residential). © ndhcom 2024. REF: 117988



Approximate Area = 659 sq ft / 61.2 sq m
For identification only - Not to scale

Heath Road, Maidstone, ME16

PREVIEW

57 Heath Road, Maidstone, ME16 9LD

Price Guide £300,000
EPC RATING: D



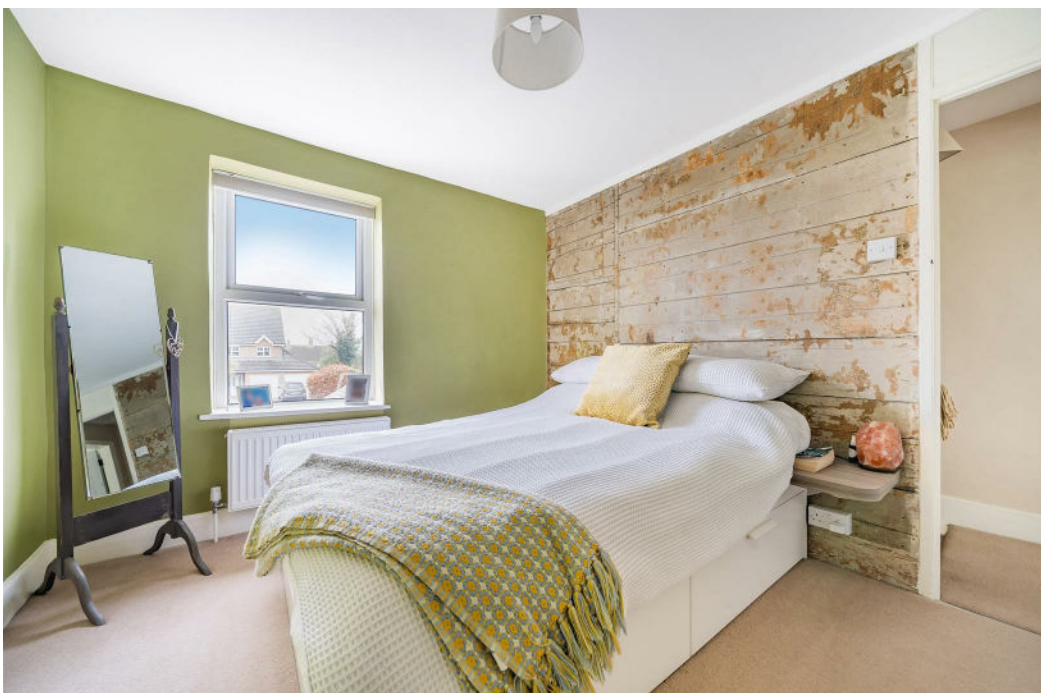


Offered chain free and situated opposite Barming Heath this stunning 2 bedroom period ragstone cottage has been sympathetically restored to harmoniously blend historical charm with modern comforts. Retaining a wealth of period features, this characterful cottage presents an idyllic retreat for those seeking a blend of historic ambiance and contemporary living. Whether enjoying a peaceful evening by the log burner or hosting gatherings in the charming courtyard garden, this property offers a lifestyle of comfort and tranquility.

For further information or to arrange a viewing, please contact us at your earliest convenience. Don't miss the opportunity to make this delightful cottage your home.

MATERIAL INFORMATION

Freehold
Council Tax Band C
EPC Report D



- Sympathetically restored period ragstone cottage
- Retains a wealth of period features and charm
- Modern comforts seamlessly integrated
- Lovely front garden with charming curb appeal
- Spacious living room with cozy log burner for chilly evenings
- Well-appointed kitchen offering functionality and style
- Two bedrooms located on the first floor, each exuding character
- Delightful courtyard garden at the rear, perfect for relaxation and entertaining
- Convenient off-street parking located to the rear of the property
- Separate Utility & Pantry

Agents Note: All dimensions are approximate and quoted for guidance only. Reference to appliances, fixtures, fittings and services does not imply that they are necessarily in good condition, fit the purpose or are in working order. Interested parties are advised to obtain verification from their Solicitors as to the Freehold/Leasehold status of the property and confirmation regarding the condition of any fixtures and fittings included in the sale.

11, COLMAN HOUSE, MAIDSTONE, KENT, ME14 1DJ | 01622 691255 | MAIDSTONESALES@SIMONMILLER.CO.UK