



## Pear Tree Avenue

Ditton, Aylesford ME20 6EB

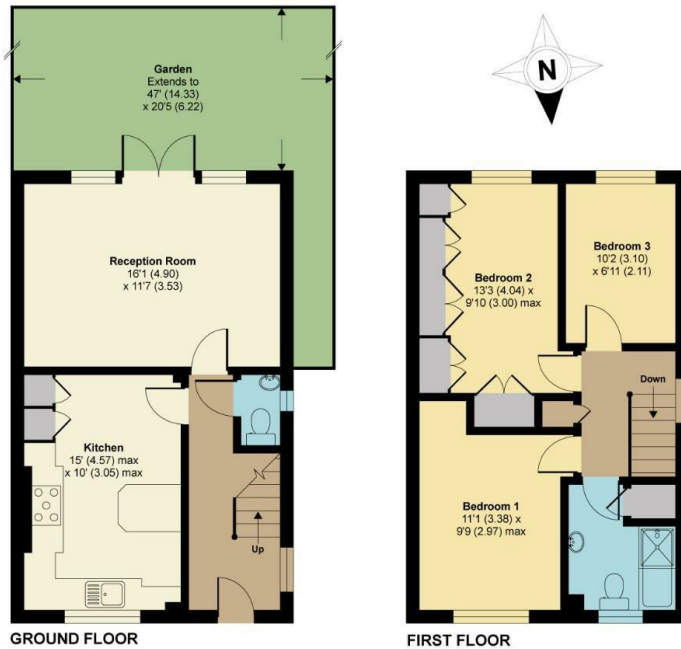
- Three Bedroom Semi Detached Family Home
- Modern and Contemporary Kitchen / Diner
- Popular Ditton Location
- SOUTH FACING Rear Garden
- Garage En-Bloc
- Short Walk From Ditton Recreation Ground

**£390,000 Freehold**

Local Authority  
Council Tax Band D  
EPC Rating C

## Pear Tree Avenue, Ditton, Aylesford, ME20

APPROX. GROSS INTERNAL FLOOR AREA 886 SQ FT 82.3 SQ METRES



Whilst every attempt has been made to ensure the accuracy of the floor plan contained here, measurements of doors, windows and rooms are approximate and no responsibility is taken for any error, omission or misstatement. These plans are for representation purposes only as defined by RICS Code of Measuring Practice and should be used as such by any prospective purchaser. Specifically no guarantee is given on the total square footage of the property if quoted on this plan. Any figure given is for initial guidance only and should not be relied on as a basis of valuation.

Copyright nichecom.co.uk 2018 Produced for Simon Miller & Company REF : 297627



**Malling Office**  
777 London Road, Larkfield, Aylesford,  
Kent, ME20 6DE

**Contact**  
01732 875706  
larkfieldsales@simonmiller.co.uk  
<https://simonmiller.co.uk/>

Agents Note: Whilst every care has been taken to prepare these particulars, they are for guidance purposes only. All measurements are approximate and for general guidance purposes only and whilst every care has been taken to ensure accuracy, they should not be relied upon and potential buyers/tenants are advised to recheck the measurements.

