



Orchard Grove

Ditton, Aylesford ME20 6BY

- Extended Three Bedroom Semi Detached Family Home
- Recently Fitted Kitchen With Integrated Appliances
- New Boiler 2023
- Recently Fitted Bathroom
- Two Large Double Bedrooms With Built In Storage
- Large Rear Garden
- Summerhouse
- Private Driveway

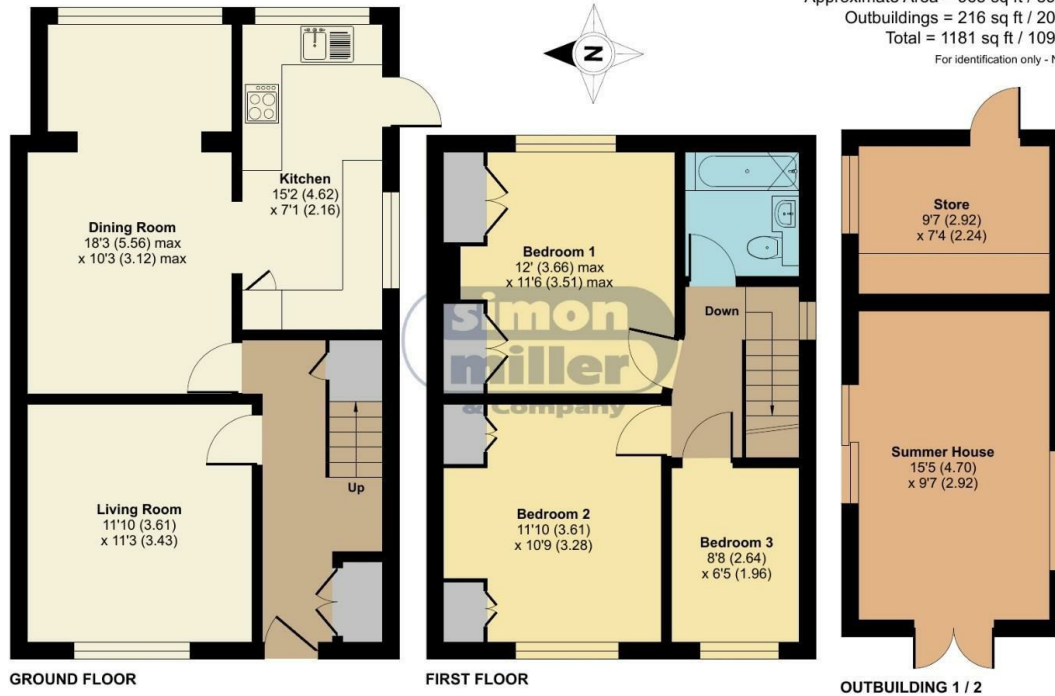
£475,000 Freehold



Local Authority
Council Tax Band
EPC Rating C

Orchard Grove, Aylesford, ME20

Approximate Area = 965 sq ft / 89.6 sq m
Outbuildings = 216 sq ft / 20.1 sq m
Total = 1181 sq ft / 109.7 sq m
For identification only - Not to scale



Floor plan produced in accordance with RICS Property Measurement Standards incorporating International Property Measurement Standards (IPMS2 Residential). © nichecom 2024. Produced for Simon Miller & Company. REF: 1133359



Malling Office
777 London Road, Larkfield, Aylesford,
Kent, ME20 6DE

Contact
01732 875706
larkfieldsales@simonmiller.co.uk
<https://simonmiller.co.uk/>

Agents Note: Whilst every care has been taken to prepare these particulars, they are for guidance purposes only. All measurements are approximate and for general guidance purposes only and whilst every care has been taken to ensure accuracy, they should not be relied upon and potential buyers/tenants are advised to recheck the measurements.