



## 19 Farleigh Gardens

Wouldham, Rochester ME1 3FW

- A TWO Bedroom TOP FLOOR Apartment
- Popular Riverside Development
- Utility/walk in Cupboard
- Balcony overlooking the river with panoramic views
- Allocated Parking Space
- Ensuite to Master Bedroom

**£290,000 Leasehold**

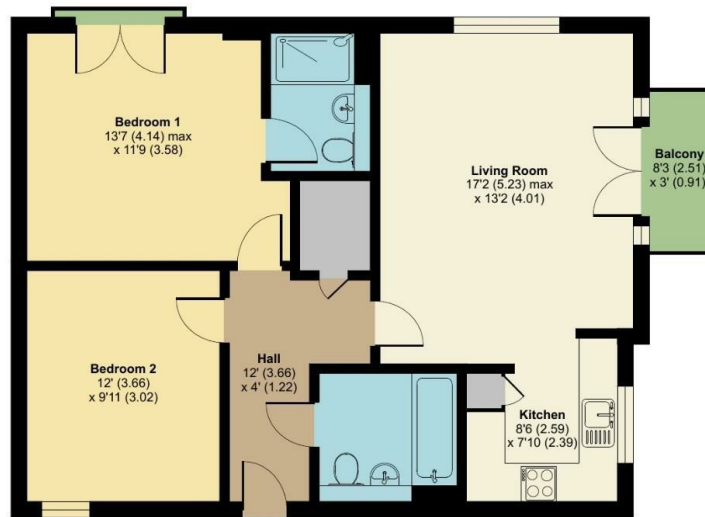


Local Authority  
Council Tax Band C  
EPC Rating B

## Farleigh Gardens, ME1

Approximate Area = 759 sq ft / 70.5 sq m

For identification only - Not to scale



SECOND FLOOR



Floor plan produced in accordance with RICS Property Measurement Standards incorporating International Property Measurement Standards (IPMS2 Residential). © nichecom 2024. Produced for Simon Miller & Company. REF: 1145099

### Malling Office

777 London Road, Larkfield, Aylesford,  
Kent, ME20 6DE

### Contact

01732 875706  
larkfieldsales@simonmiller.co.uk  
<https://simonmiller.co.uk/>

Agents Note: Whilst every care has been taken to prepare these particulars, they are for guidance purposes only. All measurements are approximate and for general guidance purposes only and whilst every care has been taken to ensure accuracy, they should not be relied upon and potential buyers/tenants are advised to recheck the measurements.