



## London Road , West Malling ME19 5AE

- A Refurbished Detached Bungalow
- Immaculate Presentation Throughout.
  - Driveway and Parking
- Walking Distance to West Malling High Street and Mainline Station
- Open-plan Living/kitchen Area
- Vacant Possession Available

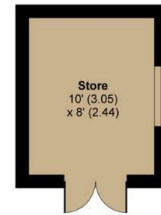
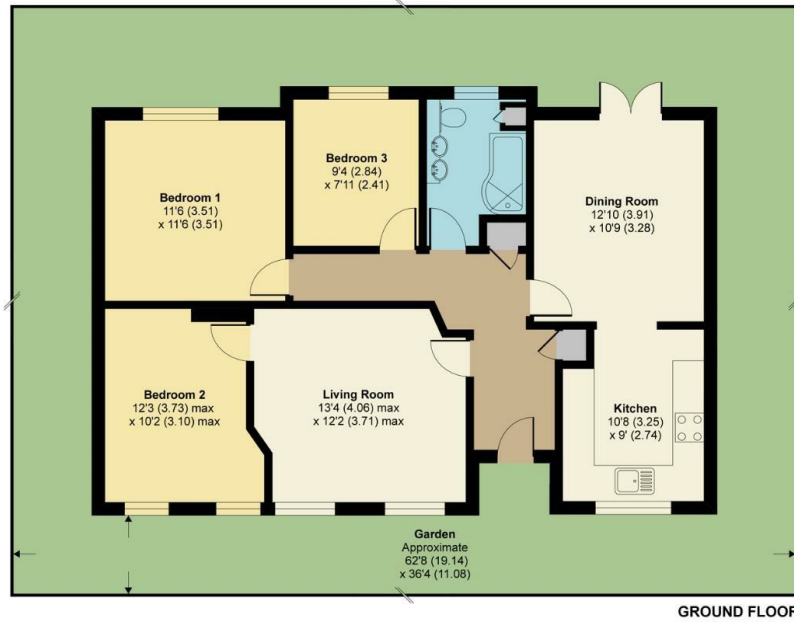
**Offers In The Region Of £540,000 Freehold**

Local Authority  
Council Tax Band E  
EPC Rating D

## London Road, West Malling, ME19

Approximate Area = 923 sq ft / 85.7 sq m  
Outbuilding = 80 sq ft / 7.4 sq m  
Total = 1003 sq ft / 93.1 sq m

For identification only - Not to scale



 Floor plan produced in accordance with RICS Property Measurement Standards incorporating International Property Measurement Standards (IPMS2 Residential). © nichcom 2021. Produced for Simon Miller & Company. REF: 680469

### Malling Office

777 London Road, Larkfield, Aylesford,  
Kent, ME20 6DE

### Contact

01732 875706  
larkfieldsales@simonmiller.co.uk  
<https://simonmiller.co.uk/>

Agents Note: Whilst every care has been taken to prepare these particulars, they are for guidance purposes only. All measurements are approximate and for general guidance purposes only and whilst every care has been taken to ensure accuracy, they should not be relied upon and potential buyers/tenants are advised to recheck the measurements.