



## Whiffen Walk

East Malling, West Malling ME19 6TZ

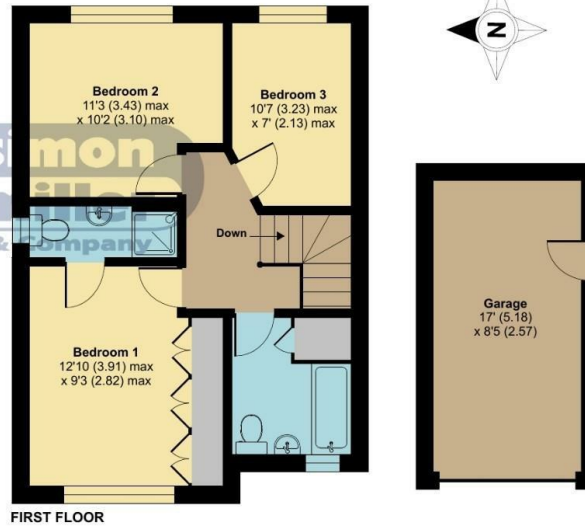
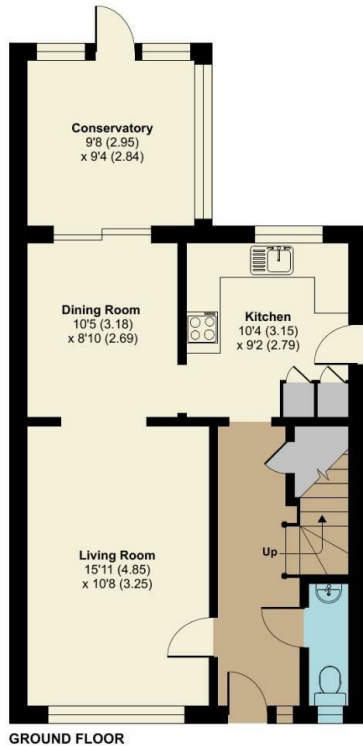
- GUIDE PRICE: £475,000-£500,000
- Popular 'Bradbourne Field' Development
- Generous Corner Plot
- Three Double Bedrooms
- Master Bedroom With En Suite
- Recently Built Conservatory

**Guide Price £475,000 Freehold**

Local Authority  
Council Tax Band E  
EPC Rating C

## Whiffen Walk, East Malling, West Malling, ME19

Approximate Area = 1107 sq ft / 102.8 sq m  
Garage = 147 sq ft / 13.6 sq m  
Total = 1254 sq ft / 116.4 sq m  
For identification only - Not to scale



Floor plan produced in accordance with RICS Property Measurement Standards incorporating International Property Measurement Standards (IPMS2 Residential). © richecom 2024. Produced for Simon Miller & Company. REF: 1140214



**Malling Office**  
777 London Road, Larkfield, Aylesford,  
Kent, ME20 6DE

**Contact**  
01732 875706  
larkfieldsales@simonmiller.co.uk  
<https://simonmiller.co.uk/>

Agents Note: Whilst every care has been taken to prepare these particulars, they are for guidance purposes only. All measurements are approximate and for general guidance purposes only and whilst every care has been taken to ensure accuracy, they should not be relied upon and potential buyers/tenants are advised to recheck the measurements.